

MARIAN BACH, BABELL, HOLYWELL, FLINTSHIRE CH8 8PZ

**BHS APPROVED**  
**CROSS COUNTRY**  
**COURSE**

**IS ALWAYS FOR HIRE BY HOUR OR BY DAY**

£14.00 per hour per Horse or Pony and Rider

Minimum Height 2 ft - Maximum Height 3 ft 3 inches

**40 x 20 METRE ARENA £10 per hour**

**NEW 64 x 24 METRE £12 per hour**

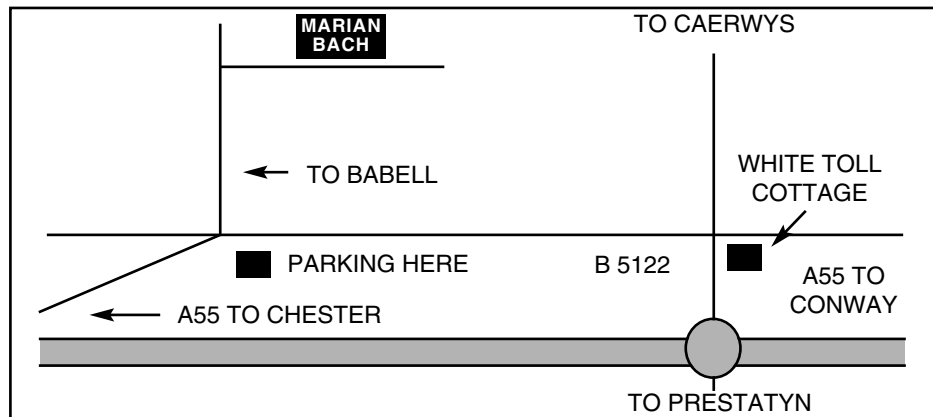
**SOFTTRACK ARENA**

**AFFILIATED DRESSAGE COMPETITIONS**

April to September (Sundays)

**UNAFFILIATED DRESSAGE COMPETITIONS**

April to October (Wednesday Evenings)



**MARIAN BACH**

**BHS APPROVED**

**CROSS COUNTRY TRAINING CENTRE**

**BRITISH DRESSAGE APPROVED**

Marian Bach, Babell, Holywell, Flintshire, CH8 8PZ

Telephone: (01352) 720442



**CROSS COUNTRY**  
**COMPETITION**

**incorporating**

**BHS QUALIFIER**

All classes are qualifiers for the Finals  
of the BHS Cross Country Championships 2011

**Sunday, 21st August, 2011**

-----  
Trophies to 3rd place and Rosettes to 6th place  
-----

1st Class 9.30a.m. prompt  
-----

**[www.marian-bach-bhs.co.uk](http://www.marian-bach-bhs.co.uk)**

## SCHEDULE

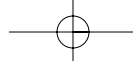
This event is a qualifier for the Finals of the BHS Cross-Country Championships 2011. In the nominated qualifying classes, the TWO highest placed riders (or two highest placed Pairs) who are BHS Gold Members ON THE DAY OF THE QUALIFIER will qualify for the Final. In the event of a combination of horse/pony and rider already having qualified, the qualification will pass down to the next eligible competitor. You must provide the Entries Secretary with your BHS membership number when you enter the qualifier but we recommend you also carry your membership card on the day. Non-members may enter qualifying classes. Competitors placed 1st and 2nd who are not Gold member on the day of the competition will also have the opportunity to qualify by becoming a Gold member of the BHS up to 7 days after the qualifier date. This will not pass down and does not affect the highest placed BHS members. All competitors must have had a clear jumping round, time penalties would be allowed but competitors couldn't qualify with jumping penalties. Competitors who compete on day tickets would still be able to qualify for the BHS Cross Country Championship as long as they were not placed 1st-6th at the BE Event prior to qualifying for the BHS Championship Rules at qualifiers may differ from those at the Finals. The Finals will take place on 25th September, 2011 at Eland Lodge Equestrian, Draycott-in-the-Clay, Sudbury, Derbyshire. Classes at the Finals will be Novice and Pairs (both max 2' 9"), and Open (max 3' 3"). To join the British Horse Society or for enquiries about the BHS Cross Country Championships, Tel: 02476 840500 or email [competitions@bhs.org.uk](mailto:competitions@bhs.org.uk) or visit [www.bhs.org.uk](http://www.bhs.org.uk)

## GENERAL RULES

1. No responsibility will be accepted for any loss or damage done to or by any animal or any property, spectators or competitors.
2. Cups and Rosettes will be presented at conclusion of each class.
3. Wagons and cars to be parked at owners risk.
4. Children under 12 are not covered by insurance and must have parents or guardians permission via a signature.
5. Hard hats up to standards BSEN1384, PAS015 or ASTM F1163 must be worn. Body protectors - level 3 2000 must be worn. Hats and body protectors must be presented for inspection when collecting numbers.
6. Horses or ponies may only be entered in 2 classes.
7. **NO DOGS ALLOWED ON THE CROSS COUNTRY COURSE.**

**Please Note: As this competition is timed  
NO entries accepted on the day.**

- Class 1 **Pairs**  
Fences not exceeding 2'9". Open to any senior or junior riders on horses or ponies. **This class is a qualifier for the Finals of the BHS Cross Country Championships 2011.**  
Entry fee £24.00 per pair.
- Class 2 **Novice**  
Fences not exceeding 2'9" - open to any senior or junior rider on horses or ponies. **This class is a qualifier for the Finals of the BHS Cross Country Championships 2011.** N.B. A novice horse/pony and rider combination is no longer a novice if the combination have been placed 1, 2, or 3 in any Hunter Trial or Cross Country Event.  
Entry fee £12.00.
- Class 3 **Open**  
Fences not exceeding 3'3". Open to any senior or junior rider on horses or ponies. **This class is a qualifier for the Finals of the BHS Cross Country Championships 2011.**  
Entry fee £12.00



### MARIAN BACH, BABELL, NR. CAERWYS, FLINTSHIRE ENTRY FORM

NAME OF COMPETITOR: .....

ADDRESS: .....

.....

.....

TELEPHONE:.....

BHS GOLD MEMBERSHIP: .....

Class No.	Entry Fee	Name of horse or pony

Entries to be received by 14th August, 2011

No late entries accepted as classes are timed

Please enclose SAE for times. **1st class 9.30a.m. prompt.**

**No entries accepted on the day.**

Cheques to:

Mrs. Brooke, Marian Bach, Babell, Holywell, Flintshire CH8 8PZ

Parking by kind permission of Martin Davies, Marian Trefedwyn

### MARIAN BACH, BABELL, NR. CAERWYS, FLINTSHIRE ENTRY FORM

NAME OF COMPETITOR: .....

ADDRESS: .....

.....

.....

TELEPHONE:.....

BHS GOLD MEMBERSHIP: .....

Class No.	Entry Fee	Name of horse or pony

Entries to be received by 14th August, 2011

No late entries accepted as classes are timed

Please enclose SAE for times. **1st class 9.30a.m. prompt.**

**No entries accepted on the day.**

Cheques to:

Mrs. Brooke, Marian Bach, Babell, Holywell, Flintshire CH8 8PZ

Parking by kind permission of Martin Davies, Marian Trefedwyn

